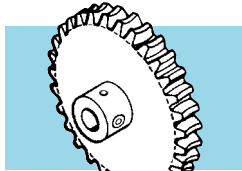
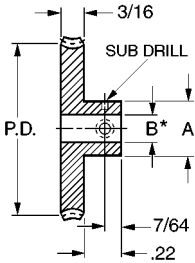


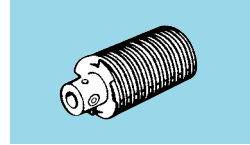
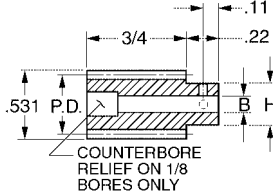


# Worm Gears & Worms - 64 Pitch

- AGMA Q10
- RIGHT-HAND
- SINGLE, DOUBLE & QUADRUPLE THREAD
- 14-1/2° PRESSURE ANGLE
- 1/8, 3/16 & 1/4 BORES



WORM GEAR



WORM

## WORM GEARS

CATALOG NUMBER DESIGNATION:

S 1 C 8  Z - P 0 6 4 B

**B**  
Bore Size  
.1248 Bore 3  
.1873 Bore 4  
.2498 Bore 6

**No. of Teeth**

**Thread Code**

Single **S**  
Double **D**  
Quadruple **Q**

No. of Teeth	P.D.
40	0.6250
45	0.7031
50	0.7813
55	0.8594
60	0.9375
65	1.0156
70	1.0938
75	1.1719
80	1.2500
85	1.3281
90	1.4063
95	1.4844
100	1.5625
105	1.6406
110	1.7187
115	1.7969
120	1.8750
*180	2.8125
*360	5.6250

B +.0005 -.0000	A	Screw Size	Sub Drill
.1248	.312	#2-56	#69
.1873	.375	#4-40	#60
.2498	.500	#6-32	#50

$$\text{Ratio} = \frac{\text{No. Teeth}}{\text{No. Threads}}$$

**MATERIAL:**

Bronze QQ-B-637 Alloy 464

Example:

S1C86Z-P064B060S is a 1/4" Bore Worm Gear with 60 Teeth, Single Threaded.

\* Available For 1/4" Bores Only

**MATERIAL:** 303 Stainless Steel

WORMS											
Catalog Number	B +.0005 -.0000	H Dia.	P.D.	Thread	Lead	Lead Angle	Screw Size	Sub Drill			
S1D93Z-P064SS	.1248	.312	.5000	Single	.04908	1°47'	#2-56	#69			
S1D94Z-P064SS	.1873	.375					#4-40	#60			
S1D96Z-P064SS	.2498	.437					#6-32	#50			
S1D93Z-P064SD	.1248	.312					Double	.09817	3°35'	#2-56	#69
S1D94Z-P064SD	.1873	.375								#4-40	#60
S1D96Z-P064SD	.2498	.437								#6-32	#50
S1D93Z-P064SQ	.1248	.312		Quadruple	.19635	7°11'				#2-56	#69
S1D94Z-P064SQ	.1873	.375								#4-40	#60
S1D96Z-P064SQ	.2498	.437								#6-32	#50

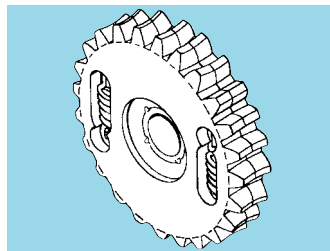
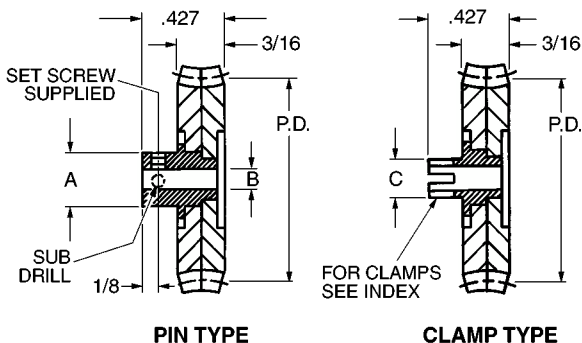
Available on special order: Worm Gears - Teeth not listed, different bore size, clamp type hub.

Worms - Different bore size and/or material, passivation for stainless steel.

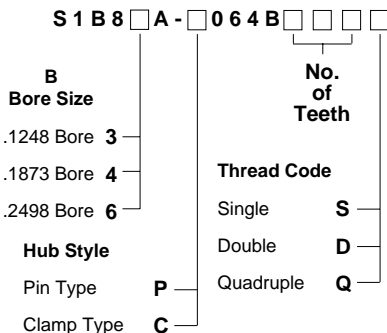


# Anti-Backlash Worm Gears - 64 Pitch

- AGMA Q10
- RIGHT-HAND
- SINGLE, DOUBLE & QUADRUPLE THREAD
- 14-1/2° PRESSURE ANGLE
- 1/8, 3/16 & 1/4 BORES



### CATALOG NUMBER DESIGNATION:



A	B +.0005 -.0000	C +.000 -.003	Screw Size	Sub Drill
.312	.1248	.188	#2-56	#69
.375	.1873	.250	#4-40	#60
.500	.2498	.312	#6-32	#50

Thread	No. of Teeth	P.D.	Matching Worm
Single	96	1.5000	NOTE 1
	100	1.5625	
	110	1.7187	
	120	1.8750	
	130	2.0312	
Double	96	1.5000	NOTE 2
	100	1.5625	
	110	1.7187	
	120	1.8750	
	130	2.0312	
Quadruple	96	1.5000	NOTE 3
	100	1.5625	
	110	1.7187	
	120	1.8750	
	130	2.0312	
	140	2.1875	

### MATERIAL:

- Gears:** Bronze QQ-B-637 Alloy 464
- Hubs:** 303 Stainless Steel
- Springs:** 302 Stainless Steel Spring Tempered

Example:  
S1B86A-C064B120Q is a 1/4" Bore Clamp Type  
Anti-Backlash Worm Gear with 120 Teeth,  
Quadruple Threaded.

Available on request: Teeth not listed, different bore size.

- NOTE 1:** Meshes with S1D93Z-P064SS, S1D94Z-P064SS and S1D96Z-P064SS worms only.
- NOTE 2:** Meshes with S1D93Z-P064SD, S1D94Z-P064SD and S1D96Z-P064SD worms only.
- NOTE 3:** Meshes with S1D93Z-P064SQ, S1D94Z-P064SQ and S1D96Z-P064SQ worms only.



# Worm Gears & Worms - 48 Pitch

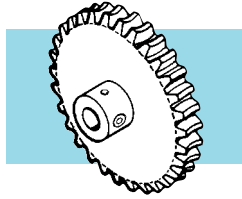
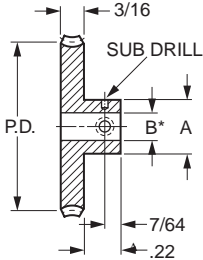
■ AGMA Q10

■ RIGHT-HAND

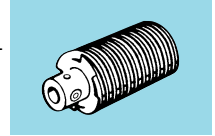
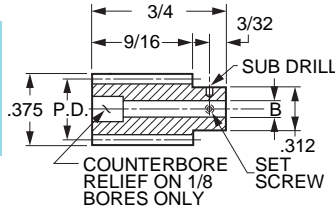
■ SINGLE, DOUBLE & QUADRUPLE THREAD

■ 1/8, 3/16 & 1/4 BORES

GEARS



WORM GEAR



WORM



**WORM GEARS**  
CATALOG NUMBER DESIGNATION:

S 1 C 8  Z - P 0 4 8 B

**B**  
Bore Size

- .1248 Bore **3**
- .1873 Bore **4**
- .2498 Bore **6**

**No. of Teeth**

**Thread Code**

- Single (14-1/2° P.A.) **S**
- Double (20° P.A.) **D**
- Quadruple (25° P.A.) **Q**

No. of Teeth	P.D.
30	0.6250
35	0.7292
40	0.8333
45	0.9375
50	1.0417
55	1.1459
60	1.2500
65	1.3541
70	1.4583
75	1.5625
80	1.6667
85	1.7707
90	1.8750
95	1.9790
100	2.0833
105	2.1875
110	2.2917
115	2.3959
120	2.5000
* 180	3.7500
Δ * 360	7.5000

B +.0005 -.0000	A	Screw Size
.1248	.312	#2-56
.1873	.375	#4-40
.2498	.500	#6-32

$$\text{Ratio} = \frac{\text{No. Teeth}}{\text{No. Threads}}$$

**MATERIAL:**

Bronze QQ-B-637 Alloy 464

Example:

S1C83Z-P048B040D is a 1/8" Bore Worm Gear with 40 Teeth, Double Threaded.

\* Available For 1/4" Bores Only

Δ 2 Pc. Construction, .28 Hub Length.

**MATERIAL:** 303 Stainless Steel

WORMS							
Catalog Number	B +.0005 -.0000	P.D.	Thread	P.A.	Lead	Lead Angle	Screw Size
S1D93Z-P048SS S1D94Z-P048SS	.1248 .1873	.3333	Single	14-1/2°	.0654	3°35'	#2-56 #4-40
S1D93Z-P048SD S1D94Z-P048SD	.1248 .1873						Double
S1D93Z-P048SQ S1D94Z-P048SQ	.1248 .1873		Quadruple	25°	.2618	14°2'	#2-56 #4-40

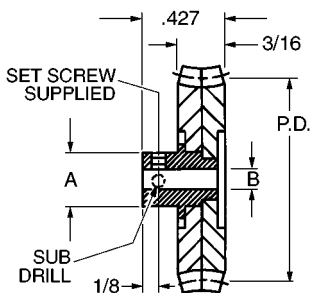
Available on special order: Worm Gears - Teeth not listed, different bore size, clamp type hub.

Worms - Different bore size and/or material, passivation for stainless steel.

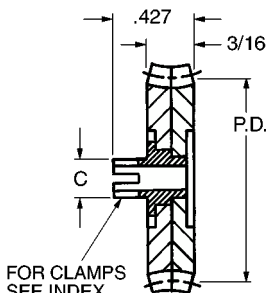


# Anti-Backlash Worm Gears - 48 Pitch

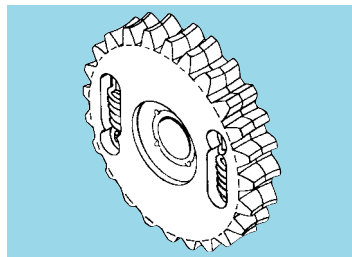
- AGMA Q10
- SINGLE, DOUBLE & QUADRUPLE THREAD
- RIGHT-HAND
- 1/8, 3/16 & 1/4 BORES



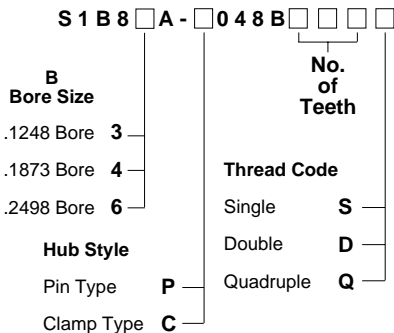
**PIN TYPE**



**CLAMP TYPE**



**CATALOG NUMBER DESIGNATION:**



A	B +.0005 -.0000	C +.000 -.003	Screw Size	Sub Drill
.312	.1248	.188	#2-56	#69
.375	.1873	.250	#4-40	#60
.500	.2498	.312	#6-32	#50

Thread	No. of Teeth	P.D.	Matching Worm
Single (14-1/2° P.A.)	70	1.4583	NOTE 1
	72	1.5000	
	80	1.6667	
	90	1.8750	
	100	2.0000	
Double (20° P.A.)	70	1.4583	NOTE 2
	72	1.5000	
	80	1.6667	
	90	1.8750	
	100	2.0000	
Quadruple (25° P.A.)	70	1.4583	NOTE 3
	72	1.5000	
	80	1.6667	
	90	1.8750	
	100	2.0000	

**MATERIAL:**

- Gears:** Bronze QQ-B-637 Alloy 464
- Hubs:** 303 Stainless Steel
- Springs:** 302 Stainless Steel Spring Tempered

Example:  
 S1B84A-P048B080D is a 3/16" Bore Pin Type  
 Anti-Backlash Worm Gear with 80 Teeth,  
 Double Threaded.

Available on request: Teeth not listed, different bore size.

- NOTE 1:** Meshes with S1D93Z-P048SS and S1D94Z-P048SS worms only.
- NOTE 2:** Meshes with S1D93Z-P048SD and S1D94Z-P048SD worms only.
- NOTE 3:** Meshes with S1D93Z-P048SQ and S1D94Z-P048SQ worms only.

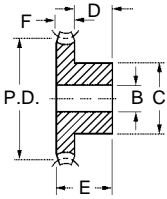


# Worm Gears and Worms - 48 Pitch

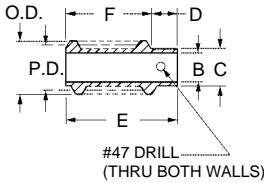
■ 14-1/2° PRESSURE ANGLE

■ RIGHT-HAND

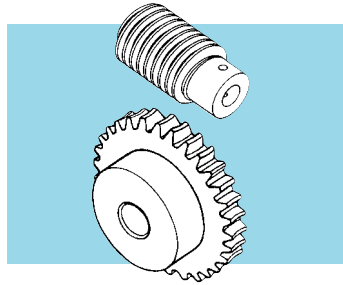
■ SINGLE THREAD



WORM GEAR



WORM



1 GEARS

MATERIAL: Bronze

WORM GEARS								
Catalog Number	No. of Teeth	P.D.	B Bore	F Face Width	E Length	C Hub Dia.	D Hub Proj.	Type
A 1B 6-N48020	20	.417	3/16	1/8	5/16	11/32	3/16	Plain
A 1B 6-N48024	24	.500		1/8	3/8	7/16	1/4	
A 1B 6-N48030	30	.625		1/2	1/2	1/2	1/4	
A 1B 6-N48036	36	.750		1/2	1/2	1/2	1/4	
A 1B 6-N48040	40	.833		1/2	1/2	1/2	1/4	
A 1B 6-N48048	48	1.000		1/2	1/2	1/2	1/4	
A 1B 6-N48060	60	1.250		1/2	1/2	1/2	1/4	
A 1B 6-N48072	72	1.500	1/4	1/8	7/16	5/8	5/16	
A 1B 6-N48080	80	1.666	5/16	1/8	7/16	9/16	5/16	
A 1B 6-N48096	96	2.000	1/4	1/8	7/16	11/16	5/16	Web Plain
A 1B 6-N48100	100	2.083	5/16	1/8	7/16	9/16	5/16	
A 1B 6-N48120	120	2.500						

MATERIAL: Steel

LEAD: .0654

LEAD ANGLE: 3° 35'

WORMS								
Catalog Number	P.D.	O.D.	B Bore	F Face Width	E Length	C Hub Dia.	D Hub Proj.	Finish
A 1C 5-N48	.333	.375	3/16	9/16	3/4	.260	3/16	Soft
A 1Q 5-N48								Hardened & Polished
A 1Q55-N48								Hardened & Ground

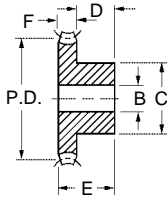


# Worm Gears and Worms - 48 Pitch

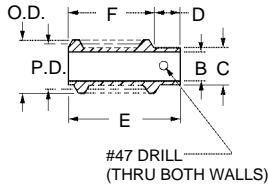
■ 20° PRESSURE ANGLE

■ RIGHT-HAND

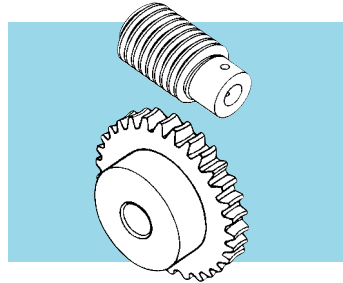
■ DOUBLE THREAD



**WORM GEAR**



**WORM**



**MATERIAL:** Bronze

## WORM GEARS

Catalog Number	No. of Teeth	P.D.	B Bore	F Face Width	E Length	C Hub Dia.	D Hub Proj.	Type
A 1B 6-Y48020	20	.417	3/16	1/8	5/16	11/32	3/16	Plain
A 1B 6-Y48024	24	.500		1/8	3/8	7/16	1/4	
A 1B 6-Y48030	30	.625		1/8	3/8	1/2	1/4	
A 1B 6-Y48036	36	.750		1/8	3/8	5/8	1/4	
A 1B 6-Y48040	40	.833		1/8	3/8	1/2	1/4	
A 1B 6-Y48050	50	1.041		1/8	3/8	5/8	1/2	
A 1B 6-Y48060	60	1.250	5/16	1/8	7/16	9/16	Web	
A 1B 6-Y48072	72	1.500	1/4	1/8	7/16	11/16		
A 1B 6-Y48096	96	2.000	5/16	1/8	7/16	9/16		
A 1B 6-Y48100	100	2.083	1/4	1/8	7/16	11/16		
A 1B 6-Y48120	120	2.500	5/16	1/8	7/16	9/16	5/16	

**MATERIAL:** Steel

**LEAD:** .1309

**LEAD ANGLE:** 7° 7'

## WORMS

Catalog Number	P.D.	O.D.	B Bore	F Face Width	E Length	C Hub Dia.	D Hub Proj.	Finish
A 1C 5-Y48	.333	.375	3/16	9/16	3/4	.260	3/16	Soft
A 1Q 5-Y48								Hardened & Polished
A 1Q55-Y48								Hardened & Ground

For engineering assistance for all SDP components, call on our applications engineers.

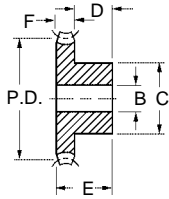


# Worm Gears and Worms - 48 Pitch

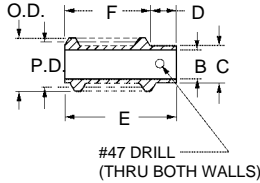
■ 25° PRESSURE ANGLE

■ RIGHT HAND

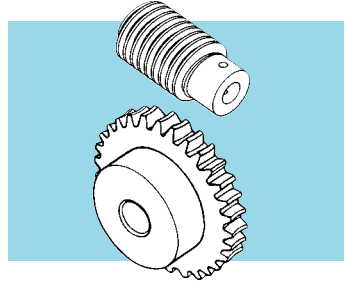
■ QUADRUPLE THREAD



WORM GEAR



WORM



MATERIAL: Bronze

WORM GEARS								
Catalog Number	No. of Teeth	P.D.	B Bore	F Face Width	E Length	C Hub Dia.	D Hub Proj.	Type
A 1B 6-Z48020	20	.417	3/16	1/8	5/16	11/32	3/16	Plain
A 1B 6-Z48024	24	.500		1/8	3/8	3/8	1/4	
A 1B 6-Z48030	30	.625		1/8	3/8	1/2	1/4	
A 1B 6-Z48036	36	.750						
A 1B 6-Z48040	40	.833						
A 1B 6-Z48048	48	1.000						
A 1B 6-Z48050	50	1.041		1/8	3/8	5/8	1/2	
A 1B 6-Z48060	60	1.250						
A 1B 6-Z48072	72	1.500	1/4	1/8	7/16	5/8	5/16	Web
A 1B 6-Z48080	80	1.666	5/16	7/16	7/16	9/16	5/16	
A 1B 6-Z48096	96	2.000						
A 1B 6-Z48120	120	2.500						

MATERIAL: Steel

LEAD: 2618

LEAD ANGLE: 14° 2'

WORMS								
Catalog Number	P.D.	O.D.	B Bore	F Face Width	E Length	C Hub Dia.	D Hub Proj.	Finish
A 1C 5-Z48	.333	.375	3/16	9/16	3/4	.260	3/16	Soft
A 1Q 5-Z48								Hardened & Polished
A 1Q55-Z48								Hardened & Ground

Discounts available for large quantity orders.

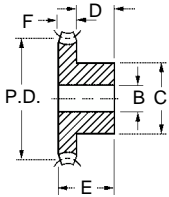


# Worm Gears & Worms - 32 Pitch

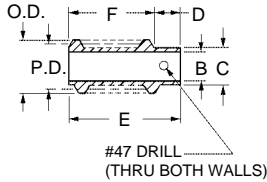
■ 14-1/2° PRESSURE ANGLE

■ RIGHT-HAND

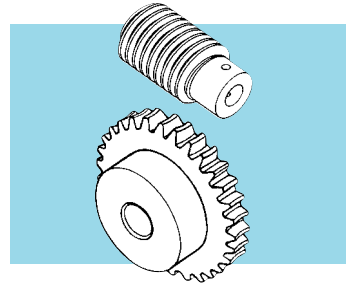
■ SINGLE THREAD



WORM GEAR



WORM



MATERIAL: Bronze

### WORM GEARS

Catalog Number	No. of Teeth	P.D.	B Bore	F Face Width	E Length	C Hub Dia.	D Hub Proj.	Type			
A 1B 6-N32020	20	.625	3/16	3/16	7/16	1/2	1/4	Plain			
A 1B 6-N32020A	20	.625		7/32	15/32						
A 1B 6-N32024	24	.750		3/16	7/16						
A 1B 6-N32030	30	.938		3/16	7/16				5/8		
A 1B 6-N32030A	30	.938		7/32	15/32				5/8		
A 1B 6-N32036	36	1.125		3/16	7/16				1/2		
A 1B 6-N32040	40	1.250	1/4	3/16	1/2	5/8	5/16 1/4 5/16	Plain			
A 1B 6-N32040A	40	1.250		7/32	15/32						
A 1B 6-N32050	50	1.562		3/16	1/2						
A 1B 6-N32050A	50	1.562		7/32	17/32		5/8				
A 1B 6-N32060	60	1.875		3/16	1/2		11/16		5/16	Web	
A 1B 6-N32060A	60	1.875		7/32	17/32		11/16				
A 1B 6-N32072	72	2.250	5/16	3/16	1/2	5/8	5/16	Web			
A 1B 6-N32080	80	2.500		3/16	1/2				11/16		
A 1B 6-N32080A	80	2.500		7/32	17/32				11/16		
A 1B 6-N32096	96	3.000		3/16	1/2				11/16	5/16	Spoked Spoked Web
A 1B 6-N32096A	96	3.000		7/32	17/32						
△ A 1B 6-N32100	100	3.125		3/16	1/2						
A 1B 6-N32100A	100	3.125	7/32	17/32	3/4	5/16	Spoked				
A 1B 6-N32120	120	3.750						3/16	1/2		

△ With lightening holes

MATERIAL: Steel

LEAD: .0982

LEAD ANGLE: 4° 5'

### WORMS

Catalog Number	P.D.	O.D.	B Bore	F Face Width	E Length	C Hub Dia.	D Hub Proj.	Finish
A 1C 5-N32	.438	.500	3/16	11/16	7/8	.320	3/16	Soft
A 1C55-N32				1/2	11/16	.350		
* A 1C55-5N32				1/2	1/2	Hubless		
A 1C55-55N32			1/4	1/2	11/16	.350	3/16	
A 1Q 5-N32	.438	.500	7/32	11/16	7/8	.320	3/16	Hardened & Polished
A 1Q55-N32						.350		
A 1Q55-5N32						.320		
A 1Q55-55N32						.350		
			1/4	1/2	11/16	.350	3/16	Hardened & Polished

\* This worm has no cross drilled holes.

For engineering assistance for all SDP components call on our applications engineers.

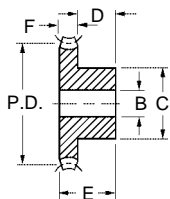


# Worm Gears and Worms - 32 Pitch

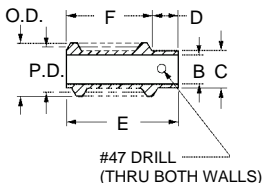
■ 20° PRESSURE ANGLE

■ RIGHT-HAND

■ DOUBLE THREAD

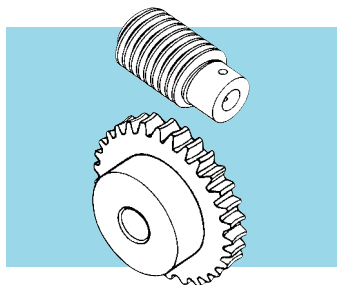


WORM GEAR



WORM

#47 DRILL  
(THRU BOTH WALLS)



MATERIAL: Bronze

## WORM GEARS

Catalog Number	No. of Teeth	P.D.	B Bore	F Face Width	E Length	C Hub Dia.	D Hub Proj.	Type
A 1B 6-Y32020A	20	.625	3/16	7/32	15/32	1/2	1/4	Plain
A 1B 6-Y32030	30	.938	3/16	3/16	7/16	5/8	1/4	
A 1B 6-Y32030A	40	1.250	1/4	7/32	15/32	5/8	5/16	
A 1B 6-Y32040A	48	1.500	3/16	3/16	7/16	1/2	1/4	Web
A 1B 6-Y32050	50	1.562	1/4	3/16	1/2	5/8	5/16	
A 1B 6-Y32060	60	1.875	1/4	3/16	1/2	11/16	5/16	
A 1B 6-Y32072	72	2.250	5/16	3/16	1/2	5/8	5/16	Web
A 1B 6-Y32080	80	2.500	5/16	3/16	1/2	11/16	5/16	Plain
A 1B 6-Y32100	100	3.125	5/16	3/16	1/2	11/16	5/16	

MATERIAL: Steel

LEAD: .1963

LEAD ANGLE: 8° 8'

## WORMS

Catalog Number	P.D.	O.D.	B Bore	F Face Width	E Length	C Hub Dia.	D Hub Proj.	Finish
A 1C 5-Y32	.438	.500	3/16	11/16	7/8	.320	3/16	Soft
A 1Q 5-Y32			7/32					Hardened & Polished
A 1Q55-5Y32			7/32					Hardened & Ground

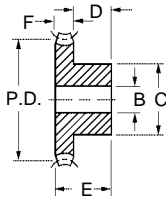


# Worm Gears and Worms - 32 Pitch

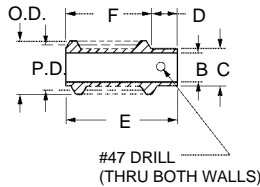
■ 25° PRESSURE ANGLE

■ RIGHT-HAND

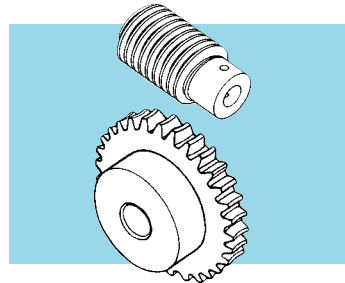
■ QUADRUPLE THREAD



WORM GEAR



WORM



MATERIAL: Bronze

## WORM GEARS

Catalog Number	No. of Teeth	P.D.	B Bore	F Face Width	E Length	C Hub Dia.	D Hub Proj.	Type
A 1B 6-Z32020	20	.625				1/2		Plain
A 1B 6-Z32024	24	.750	3/16	3/16	7/16	1/2	1/4	
A 1B 6-Z32030	30	.938				5/8		
A 1B 6-Z32036	36	1.125				1/2		
A 1B 6-Z32040	40	1.250	1/4	3/16	1/2	5/8	5/16	Plain Web
A 1B 6-Z32048	48	1.500	3/16	3/16		1/2		
A 1B 6-Z32050	50	1.562	1/4	3/16	1/2	5/8	5/16	Web
A 1B 6-Z32060	60	1.875	1/4	3/16	1/2	11/16	5/16	
A 1B 6-Z32072	72	2.250	5/16	3/16	1/2	5/8	5/16	
A 1B 6-Z32080	80	2.500	5/16	3/16	1/2	11/16	5/16	
A 1B 6-Z32096	96	3.000	5/16	3/16	1/2	11/16	5/16	
A 1B 6-Z32100	100	3.125	5/16	3/16	1/2	3/4	5/16	
* A 1B 6-Z32120	120	3.750	5/16	3/16	1/2	3/4	5/16	

\* To be discontinued when current stock is depleted.

LEAD: .3927

MATERIAL: Steel

LEAD ANGLE: 15° 57'

## WORMS

Catalog Number	P.D.	O.D.	B Bore	F Face Width	E Length	C Hub Dia.	D Hub Proj.	Finish
A 1C 5-Z32	.438	.500	3/16	11/16	7/8	.320	3/16	Soft
A 1Q 5-Z32			7/32			<sup>Δ</sup> .375		Hardened & Polished
A 1Q55-Z32			7/32			.350		Hardened & Ground

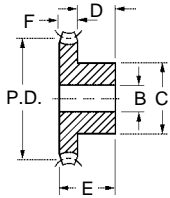
<sup>Δ</sup> Hub Diameter will be .32 when current stock is depleted.

Discounts available for large quantity orders.

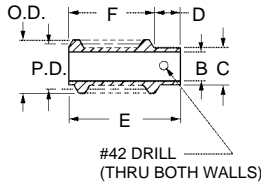


# Worm Gears & Worms - 24 Pitch

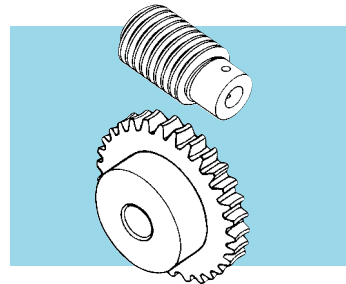
- 14-1/2° PRESSURE ANGLE
- RIGHT-HAND
- SINGLE THREAD



**WORM GEAR**



**WORM**



**MATERIAL:** Bronze

WORM GEARS								
Catalog Number	No. of Teeth	P.D.	B Bore	F Face Width	E Length	C Hub Dia.	D Hub Proj.	Type
A 1B 6-N24018	18	.750	3/16	1/4	9/16	5/8	1/2	Plain
A 1B 6-N24020	20	.833						
A 1B 6-N24024	24	1.000						
A 1B 6-N24030	30	1.250						
A 1B 6-N24036	36	1.500						
A 1B 6-N24040	40	1.667	1/4	1/4	9/16	1/2	5/16	Web Plain Web Spoked
A 1B 6-N24048	48	2.000						
A 1B 6-N24050	50	2.083						
A 1B 6-N24060	60	2.500						
A 1B 6-N24072	72	3.000						
A 1B 6-N24080	80	3.333	5/16	1/4	5/8	7/8	3/8	Spoked
*A 1B 6-N24096	96	4.000						
A 1B 6-N24096A	96	4.000						
A 1B 6-N24100	100	4.167						

\*Available on special order only.

**MATERIAL:** Steel

**LEAD:** .1309

**LEAD ANGLE:** 4° 46'

WORMS									
Catalog Number	P.D.	O.D.	B Bore	F Face Width	E Length	C Hub Dia.	D Hub Proj.	Finish	
A 1C 5-N24	.500	.583	3/16	13/16	1-1/16	3/8	1/4	Soft	
A 1C55-N24			1/4	5/8	7/8			Hardened & Polished	
A 1Q55-N24			1/4	13/16	1-1/16				Hardened & Ground
A 1Q55-SN24									

If your design calls for a modified part, send us your print.  
 Most probably your requirements can be met with standard tooling  
 ...with merely a nominal charge.

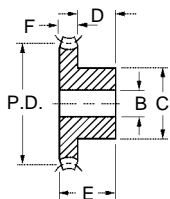


# Worm Gears and Worms - 24 Pitch

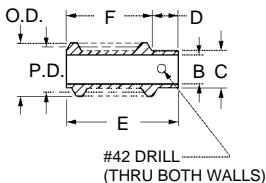
■ 20° PRESSURE ANGLE

■ RIGHT-HAND

■ DOUBLE THREAD

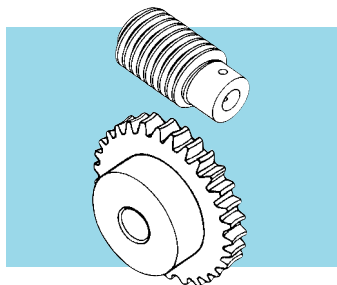


WORM GEAR



WORM

#42 DRILL  
(THRU BOTH WALLS)



MATERIAL: Bronze

## WORM GEARS

Catalog Number	No. of Teeth	P.D.	B Bore	F Face Width	E Length	C Hub Dia.	D Hub Proj.	Type
A 1B 6-Y24018	18	.750	3/16	1/4	1/2	1/2	1/4	Plain
A 1B 6-Y24020	20	.833						
A 1B 6-Y24024	24	1.000	3/16	1/4	9/16	5/8	5/16	
A 1B 6-Y24030	30	1.250						
A 1B 6-Y24036	36	1.500						
A 1B 6-Y24040	40	1.667	1/4	1/4	9/16	5/8	5/16	Web
A 1B 6-Y24048	48	2.000	5/16	1/4	9/16	5/8	5/16	
A 1B 6-Y24050	50	2.083						
A 1B 6-Y24060	60	2.500	5/16	1/4	9/16	3/4	5/16	Spoked
A 1B 6-Y24072	72	3.000						
A 1B 6-Y24080	80	3.333	5/16	1/4	5/8	7/8	3/8	
*A 1B 6-Y24096	96	4.000	3/8	1/4	5/8	7/8	3/8	

\*Available on special order only.

MATERIAL: Steel

LEAD: .2618

LEAD ANGLE: 9° 28'

## WORMS

Catalog Number	P.D.	O.D.	B Bore	F Face Width	E Length	C Hub Dia.	D Hub Proj.	Finish
A 1C 5-Y24			3/16					Soft
A 1Q 5-Y24	.500	.583	1/4	13/16	1-1/16	3/8	1/4	Hardened & Polished
A 1Q55-Y24			1/4					Hardened & Ground

This catalog contains the largest off-the-shelf selection of metric gears.

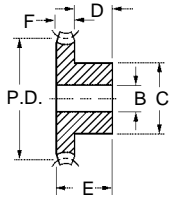


# Worm Gears and Worms - 24 Pitch

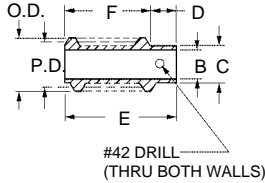
■ 25° PRESSURE ANGLE

■ RIGHT-HAND

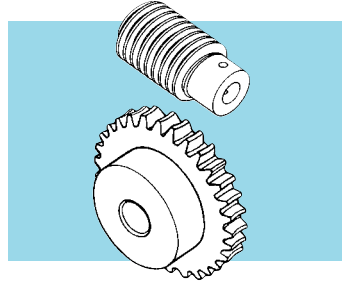
■ QUADRUPLE THREAD



WORM GEAR



WORM



MATERIAL: Bronze

## WORM GEARS

Catalog Number	No. of Teeth	P.D.	B Bore	F Face Width	E Length	C Hub Dia.	D Hub Proj.	Type
* A 1B 6-Z24018	18	.750	3/16	1/4	1/2	1/2	1/4	Plain
A 1B 6-Z24020	20	.833		1/4	9/16	5/8	5/16	
A 1B 6-Z24024	24	1.000		1/4	9/16	5/8	5/16	
A 1B 6-Z24030	30	1.250		1/4	9/16	5/8	5/16	
A 1B 6-Z24040	40	1.667		5/16	1/4	9/16	5/8	
A 1B 6-Z24048	48	2.000	5/16	1/4	9/16	5/8	5/16	Web
A 1B 6-Z24050	50	2.083	5/16	1/4	9/16	3/4	5/16	
* A 1B 6-Z24060	60	2.500	5/16	1/4	5/8	7/8	3/8	Spoked
A 1B 6-Z24072	72	3.000						
A 1B 6-Z24080	80	3.333						
A 1B 6-Z24096	96	4.000	3/8	1/4	5/8	7/8	3/8	Spoked
A 1B 6-Z24100	100	4.167						

\* Available on special order only.

MATERIAL: Steel

LEAD: .5236

LEAD ANGLE: 18° 26'

## WORMS

Catalog Number	P.D.	O.D.	B Bore	F Face Width	E Length	C Hub Dia.	D Hub Proj.	Finish
A 1C 5-Z24	.500	.583	3/16	13/16	1-1/16	3/8	1/4	Soft
A 1Q 5-Z24			1/4					Hardened & Polished
A 1Q55-Z24			1/4					Hardened & Ground

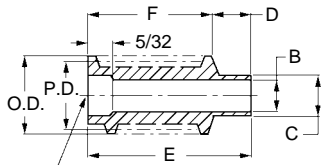
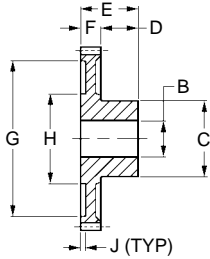
This catalog contains the largest off-the-shelf selection of metric gears.



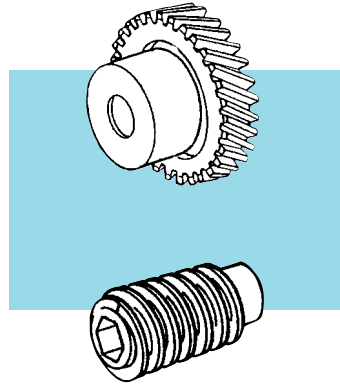
# INCH Molded Worm Gears & Worms - 48, 32 & 24 Pitch

- 14-1/2° PRESSURE ANGLE
- RIGHT-HAND
- SINGLE THREAD

GEARS



.19 ACROSS FLATS, HEX



**MATERIAL:** Gear – 48 & 32 Pitch - Acetal  
24 Pitch - Mineral Filled Nylon, Black

WORM GEARS**															
Catalog Number	Pitch	No. of Teeth	P.D.	O.D.	B Bore +.001 -.002	F Face Width	E Length	C Hub Dia.	D Hub Proj.	G	H	J			
A 1M 6-N48020	48	20	0.417	0.458	.187	3/16	3/8	11/32	3/16	—	—	—			
A 1M 6-N48030		30	0.625	0.667			7/16	7/16	1/4						
A 1M 6-N48040		40	0.833	0.875		3/16	7/16	1/2	1/4						
A 1M 6-N48050		50	1.042	1.084			1/2	5/8	1/4						
A 1M 6-N32020	32	20	0.625	0.687	.187	3/16	7/16	1/2	1/4	—	—	—			
A 1M 6-N32030		30	0.938	1.000				5/8							
A 1M 6-N32040		40	1.250	1.312				5/16					31/32	5/8	1/32
A 1M 6-N32050	50	1.562	1.625	.250	3/16	1/2	5/8	5/16	1-19/64	15/32	3/64				
A 1M 6-N24020	24	20	0.833	0.917	.187	1/4	9/16	5/8	5/16	—	—	—			
A 1M 6-N24030		30	1.250	1.333									15/16	15/32	1/16
A 1M 6-N24040		40	1.667	1.750									1-23/64	3/4	1/16
A 1M 6-N24050		50	2.083	2.167											

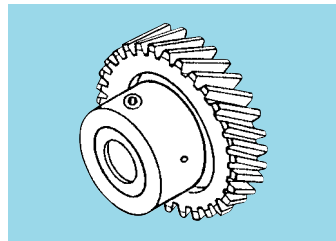
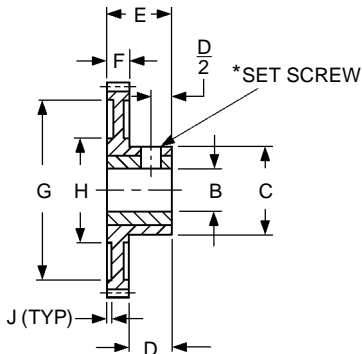
**MATERIAL:** Nylon

WORMS									
Catalog Number	Pitch	P.D.	O.D.	B Bore +.001 -.002	F Face Width	E Length	C Hub Dia.	D Hub Proj.	
A 1M 5-N48	48	0.333	0.375	.187	33/64	47/64	.26	3/16	
A 1M 5-N32	32	0.438	0.500		41/64	53/64	.32	3/16	
A 1M 5-N24	24	0.500	0.583		41/64	57/64	.37	1/4	

\*\*These are in effect HELICAL gears with a helix angle compatible with the worms. When in mesh, they operate as a worm-pair at right angles. These gears will also mesh with standard-stock steel or brass worms.

**sdp INCH** Molded Worm Gears with Inserts - 48, 32 & 24 Pitch

- 14-1/2° PRESSURE ANGLE
- RIGHT-HAND
- SINGLE THREAD



**MATERIAL:** Gear - 48 & 32 Pitch - Acetal  
 24 Pitch - Mineral Filled Nylon  
 Insert - Brass

WORM GEARS**												
Catalog Number	Pitch	No. of Teeth	P.D.	O.D.	B Bore +.001 -.000	F Face Width	E Length	C Hub Dia.	D Hub Proj.	G	H	J
A 1T 6-N482004	48	20	0.417	0.459	1/8	3/16	3/8	11/32	3/16	—	—	—
A 1T 6-N483004		30	0.625	0.667	1/8	3/16	7/16	7/16	1/4	—	—	—
A 1T 6-N483006		30	0.625	0.667	1/8	3/16	7/16	7/16	1/4	—	—	—
A 1T 6-N484006		40	0.833	0.875	3/16	3/16	7/16	1/2	1/4	—	—	—
A 1T 6-N484008		40	0.833	0.875	3/16	3/16	7/16	1/2	1/4	—	—	—
A 1T 6-N485006		50	1.042	1.084	3/16	3/16	7/16	1/2	1/4	—	—	—
A 1T 6-N485008	50	1.042	1.084	3/16	3/16	7/16	1/2	1/4	—	—	—	
A 1T 6-N322006	32	20	0.625	0.687	3/16	3/16	7/16	1/2	1/4	—	—	—
A 1T 6-N322008		20	0.625	0.687	3/16	3/16	7/16	1/2	1/4	—	—	—
A 1T 6-N323006		30	0.938	1.000	3/16	3/16	7/16	5/8	1/4	—	—	—
A 1T 6-N323008		30	0.938	1.000	3/16	3/16	7/16	5/8	1/4	—	—	—
A 1T 6-N324008		40	1.250	1.312	1/4	3/16	1/2	5/8	5/16	31/32	5/8	1/32
A 1T 6-N324010		40	1.250	1.312	1/4	3/16	1/2	5/8	5/16	31/32	5/8	1/32
A 1T 6-N325008	50	1.562	1.625	1/4	3/16	1/2	5/8	5/16	1-19/64	5/8	1/32	
A 1T 6-N325010	50	1.562	1.625	1/4	3/16	1/2	5/8	5/16	1-19/64	5/8	1/32	
A 1T 6-N242006	24	20	0.833	0.917	3/16	1/4	9/16	5/8	5/16	—	—	—
A 1T 6-N242008		20	0.833	0.917	3/16	1/4	9/16	5/8	5/16	—	—	—
A 1T 6-N243006		30	1.250	1.333	3/16	1/4	9/16	5/8	5/16	15/16	3/8	1/16
A 1T 6-N243008		30	1.250	1.333	3/16	1/4	9/16	5/8	5/16	15/16	3/8	1/16
A 1T 6-N244008		40	1.667	1.750	1/4	1/4	9/16	3/4	5/16	1-23/64	3/4	1/16
A 1T 6-N244010		40	1.667	1.750	1/4	1/4	9/16	3/4	5/16	1-23/64	3/4	1/16
A 1T 6-N245008	50	2.083	2.167	1/4	1/4	9/16	3/4	5/16	1-25/32	3/4	1/16	
A 1T 6-N245010	50	2.083	2.167	1/4	1/4	9/16	3/4	5/16	1-25/32	3/4	1/16	

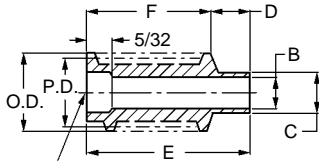
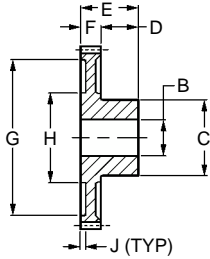
\* Gears with 1/8" bore have #2-56 Set Screw and Spot Drill.  
 3/16" bore have #4-40 Set Screw and Spot Drill.

Gears with 1/4" bore have #6-32 Set Screw and Spot Drill.  
 5/16" bore have #8-32 Set Screw and Spot Drill.

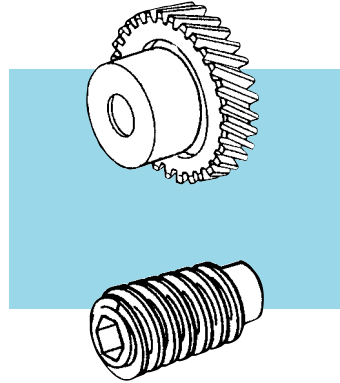
\*\*These are in effect HELICAL gears with a helix angle compatible with the worms. When in mesh, they operate as a worm-pair at right angles. These gears will also mesh with standard-stock steel or brass worms.

**sdp INCH** Molded Worm Gears & Worms - 48, 32 & 24 Pitch

- 20° PRESSURE ANGLE
- RIGHT-HAND
- DOUBLE THREAD



.19 ACROSS  
FLATS, HEX



**MATERIAL:** Gear – 48 & 32 Pitch - Acetal  
24 Pitch - Mineral Filled Nylon

**WORM GEARS\*\***

Catalog Number	Pitch	No. of Teeth	P.D.	O.D.	B Bore +.001 -.002	F Face Width	E Length	C Hub Dia.	D Hub Proj.	G	H	J								
A 1M 6-Y48020	48	20	0.417	0.458	.187	3/16	3/8	11/32	3/16	—	—	—								
A 1M 6-Y48030		30	0.625	0.667									7/16	7/16	1/4					
A 1M 6-Y48040		40	0.833	0.875		3/16	7/16	1/2	1/4											
A 1M 6-Y48050		50	1.042	1.084																
A 1M 6-Y32020	32	20	0.625	0.687	.187	3/16	7/16	1/2	5/8	—	—	—								
A 1M 6-Y32030		30	0.938	1.000																
A 1M 6-Y32040		40	1.250	1.312									.250	3/16	1/2	5/8	5/16	31/32	5/8	1/32
A 1M 6-Y32050		50	1.562	1.625																
A 1M 6-Y24020	24	20	0.833	0.917	.187	1/4	9/16	5/8	5/16	15/16	15/32	1/16								
A 1M 6-Y24030		30	1.250	1.333																
A 1M 6-Y24040		40	1.667	1.750									.312	1/4	9/16	3/4	5/16	1-23/64	3/4	1/16
A 1M 6-Y24050		50	2.083	2.167																

**MATERIAL:** Nylon

**WORMS**

Catalog Number	Pitch	P.D.	O.D.	B Bore +.001 -.002	F Face Width	E Length	C Hub Dia.	D Hub Proj.
A 1M 5-Y48	48	0.333	0.375	.187	9/16	3/4	.26	3/16
A 1M 5-Y32	32	0.438	0.500		11/16	7/8	.32	3/16
A 1M 5-Y24	24	0.500	0.583		11/16	15/16	.37	1/4

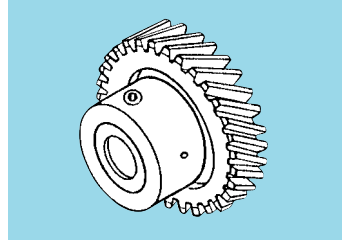
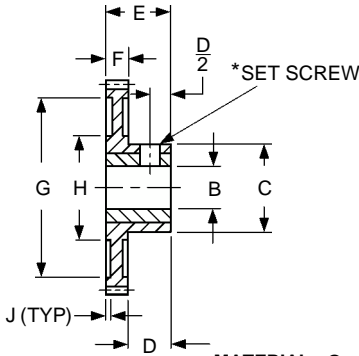
\*\*These are in effect HELICAL gears with a helix angle compatible with the worms. When in mesh, they operate as a worm-pair at right angles. These gears will also mesh with standard-stock steel or brass worms.

**sdp INCH** Molded Worm Gears with Inserts - 48, 32 & 24 Pitch

■ 20° PRESSURE ANGLE

■ RIGHT-HAND

■ DOUBLE THREAD



**MATERIAL:** Gear - 48 & 32 Pitch - Acetal  
 24 Pitch - Mineral Filled Nylon  
 Insert - Brass

**WORM GEARS\*\***

Catalog Number	Pitch	No. of Teeth	P.D.	O.D.	B Bore +.001 - .000	F Face Width	E Length	C Hub Dia.	D Hub Proj.	G	H	J
A 1T 6-Y482004	48	20	0.417	0.459	1/8	3/16	3/8	11/32	3/16	—	—	—
A 1T 6-Y483004		30	0.625	0.667	1/8	3/16	7/16	7/16	1/4	—	—	—
A 1T 6-Y483006		30	0.625	0.667	3/16	3/16	7/16	7/16	1/4	—	—	—
A 1T 6-Y484006		40	0.833	0.875	3/16 1/4	3/16	7/16	1/2	1/4	—	—	—
A 1T 6-Y484008		40	0.833	0.875	1/4	3/16	7/16	1/2	1/4	—	—	—
A 1T 6-Y485006		50	1.042	1.084	3/16 1/4	3/16	7/16	1/2	1/4	—	—	—
A 1T 6-Y485008	50	1.042	1.084	1/4	3/16	7/16	1/2	1/4	—	—	—	
A 1T 6-Y322006	32	20	0.625	0.687	3/16 1/4	3/16	7/16	1/2	1/4	—	—	—
A 1T 6-Y323006		30	0.938	1.000	3/16 1/4	3/16	7/16	5/8	1/4	—	—	—
A 1T 6-Y323008		30	0.938	1.000	1/4	3/16	7/16	5/8	1/4	—	—	—
A 1T 6-Y324008		40	1.250	1.312	5/16	3/16	1/2	5/8	5/16	31/32	5/8	1/32
A 1T 6-Y324010		40	1.250	1.312	1/4	3/16	1/2	5/8	5/16	1-19/64	5/8	1/32
A 1T 6-Y325008		50	1.562	1.625	5/16	3/16	1/2	5/8	5/16	1-19/64	5/8	1/32
A 1T 6-Y325010	50	1.562	1.625	1/4	3/16	1/2	5/8	5/16	1-19/64	5/8	1/32	
A 1T 6-Y242006	24	20	0.833	0.917	3/16 1/4	1/4	9/16	5/8	5/16	—	—	—
A 1T 6-Y242008		20	0.833	0.917	1/4	1/4	9/16	5/8	5/16	—	—	—
A 1T 6-Y243006		30	1.250	1.333	3/16 1/4	1/4	9/16	5/8	5/16	15/16	3/8 7/16	1/16
A 1T 6-Y243008		30	1.250	1.333	1/4	1/4	9/16	5/8	5/16	15/16	3/8 7/16	1/16
A 1T 6-Y244008		40	1.667	1.750	5/16	1/4	9/16	3/4	5/16	1-23/64	3/4	1/16
A 1T 6-Y244010		40	1.667	1.750	1/4	1/4	9/16	3/4	5/16	1-23/64	3/4	1/16
A 1T 6-Y245008	50	2.083	2.167	5/16	1/4	9/16	3/4	5/16	1-25/32	3/4	1/16	
A 1T 6-Y245010	50	2.083	2.167	1/4	1/4	9/16	3/4	5/16	1-25/32	3/4	1/16	

\*Gears with 1/8" bore have #2-56 Set Screw and Spot Drill.  
 3/16" bore have #4-40 Set Screw and Spot Drill.

Gears with 1/4" bore have #6-32 Set Screw and Spot Drill.  
 5/16" bore have #8-32 Set Screw and Spot Drill.

\*\*These are in effect HELICAL gears with a helix angle compatible with the worms. When in mesh, they operate as a worm-pair at right angles. These gears will also mesh with standard-stock steel or brass worms.