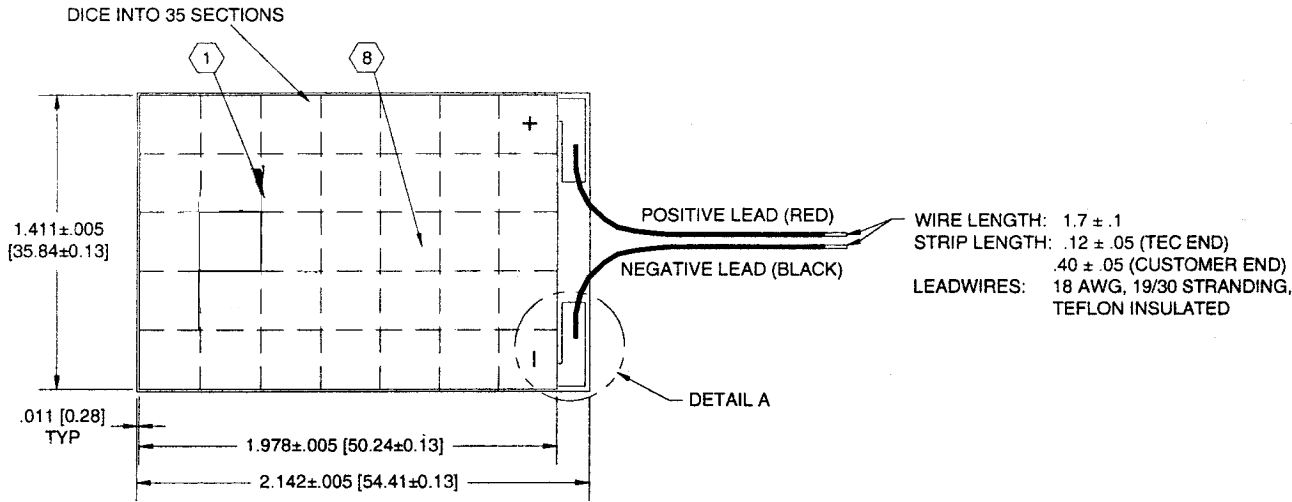
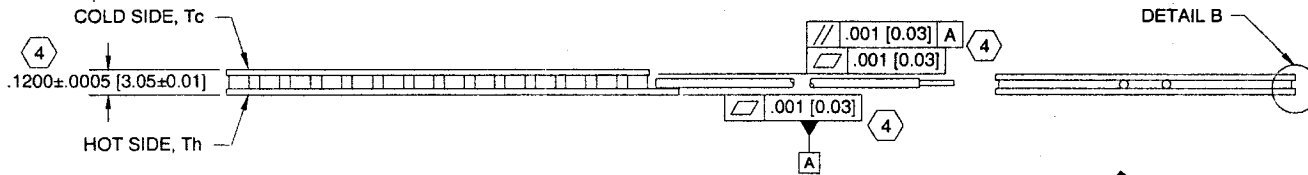


Assembly Drawing, Thermoelectric Cooler

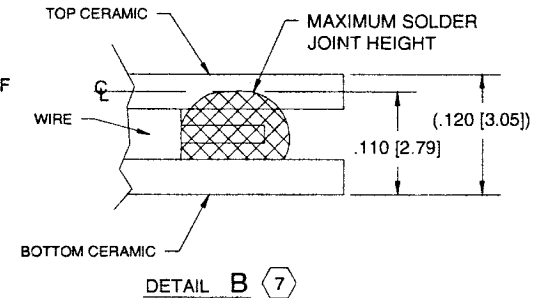
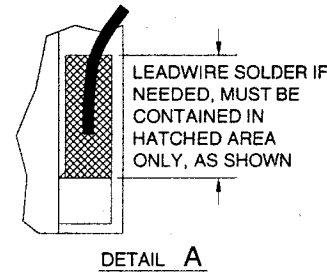
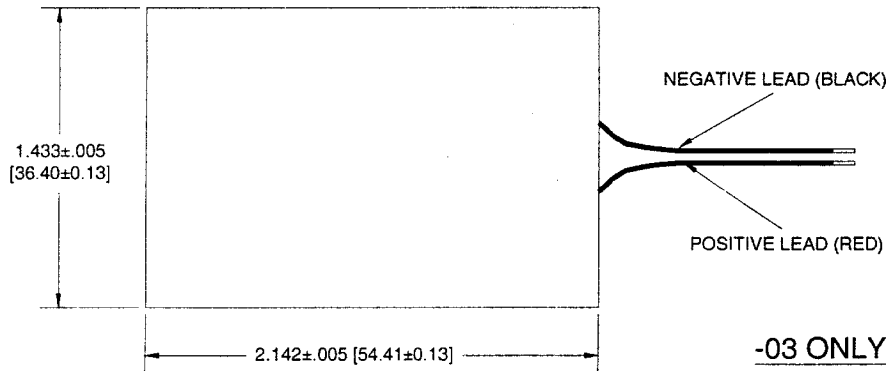


ACCEPTANCE TEST SPECIFICATIONS	
I, A	: 8.0
V, VDC	: 3.23-3.94
T ₀ °C, MAX	: -13
AC RES., Ω	: .298-.380

EZ ACCEPTANCE TEST SPECIFICATIONS	
Δ T TEST	STILL NITROGEN (1 ATM)
V, VDC	: 5.2-6.2
T _c , °C (MAX)	: -22
T _h , °C	: 27±.5
I, AMPS	: 12.0
AC RES., Ω	: .304-.386
COUPLES	: 70
ELEMENT SIZE	: .096 SQ. X .050 (without tan)



TEMPERATURE UNIFORMITY SPECIFICATION	
MAX. ACCEPTANCE TEMP. DIFFERENCE: 14°C	



Unless Otherwise Specified
 All dimensions are in inches and per ANSI Y14.5M
 Dimensions shown in [] are in millimeters.
 2 place decimals are ±.030
 3 place decimals are ±.010